



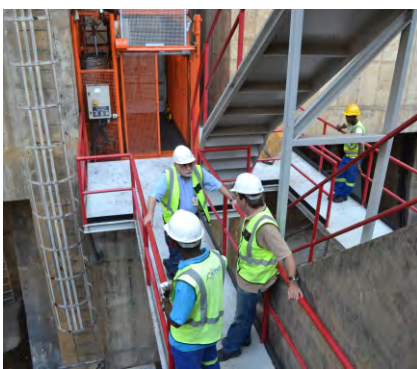
INGEROP SOUTH AFRICA COMPANY PROFILE



CONSULTING ENGINEERING
AND PROJECT MANAGEMENT



Building | Urban Development & Transportation | Energy & Industry | Water & Environment



CONTENTS

Editorial	2
Corporate organization	3
Ingerop Statistics	4
Certifications	5
Ingerop in the world	6
Ingerop in Africa	7

DISCIPLINES

Building	8
Urban Development and Transportation	9
Water & Environment	10
Energy & Industry	12
Experience in Mining	15
Contacts	16

➤ EXCELLING BEYOND THE NORM

Ingerop South Africa is a multidisciplinary consulting engineering and project management company which was established in 1957. With 60 years' experience and more than 120 qualified personnel, the company is ideally placed to provide, in partnership with its clients, innovative and appropriate world-class solutions. Ingerop South Africa developed strong capabilities to serve both the public and private sector clients in the fields of: Energy & Industry, Water & Environment, Urban Development & Transportation and Buildings.

Within all its disciplines, Ingerop South Africa has earned merit through continuous improvement and the embracing of its ethos "Excelling beyond the norm". Ingerop South Africa is a member of the Ingerop Group of Companies, a long established privately-owned French consulting engineering firm currently employing over 1700 permanent staff, of which 1000 are engineers, over 200M€ annual turnover and is today a leading partner in the execution of all types of engineering projects.

Ingerop South Africa is a Level 2 BEE rated enterprise



LEVEL 2 BBBEE



➤ CERTIFICATIONS

Ingerop integrates social environmental and economic concerns in all of its activities taking into account:

- the health and safety of its employees based on the OHSAS 18001 standard
- its clients objectives thanks to constant investment in improving management processes as set out in the standards of ISO 9001
- Ingerop South Africa was nominated in the top 500 performing companies, incorporating the public sector, in South Africa, and ranked 3rd within our sector, Consulting Engineering

INGEROP SOUTH AFRICA IS A MEMBER OF

NIASA	- Nuclear Industry Association of South Africa
IMIESA	- Institute of Municipal Engineering of South Africa
ECSA	- Engineering Council of South Africa
CESA	- Consulting Engineers South Africa
WISA	- Water Institute of South Africa
IWMSA	- Institute of Waste Management of Southern Africa
BEPEC	- Built Environment Professions Export Council
SARF	- South African Road Federation
SANCOLD	- South African National Commission on Large Dams
ICOLD	- International Commission on Large Dams
FIDIC	- The International Federation of Consulting Engineers
RRA	- Railroad Association

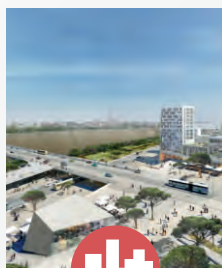


➤ A COMPLETE RANGE OF ENGINEERING SERVICES THROUGHOUT 4 BUSINESS LINES

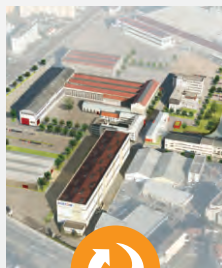
Technical & Organisational Assistance to Owners | Feasibility Studies | Preliminary Design | Detailed Design | Construction Design | Building Permit Documentation | Project Management | Procurement | Design and Construction Management | Consulting to Governments and Institutional Organisations | Assistance to Maintenance



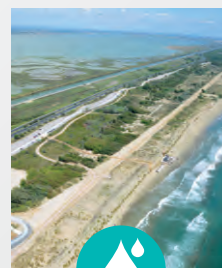
BUILDING



URBAN DEVELOPMENT
& TRANSPORTATION

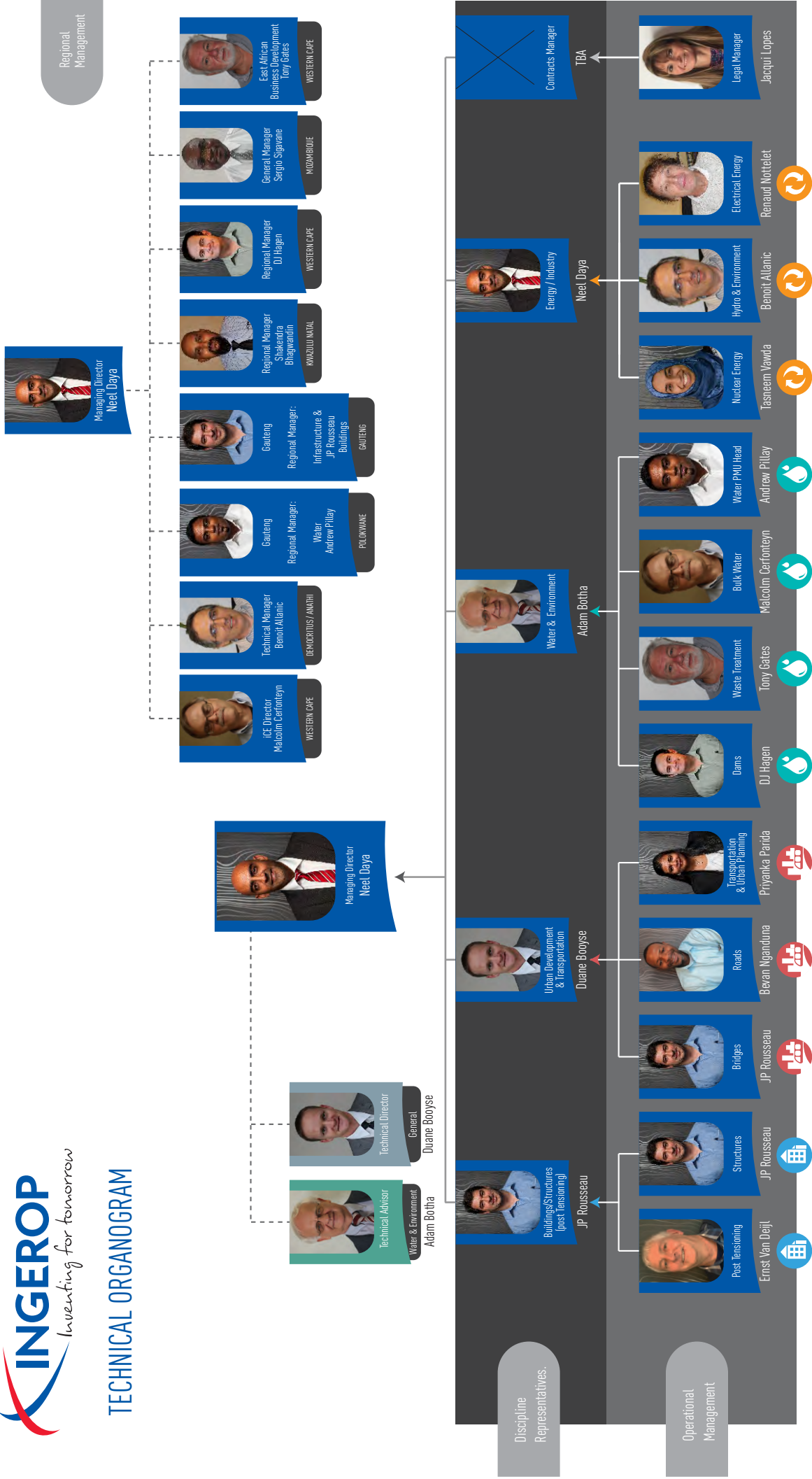


ENERGY
& INDUSTRY

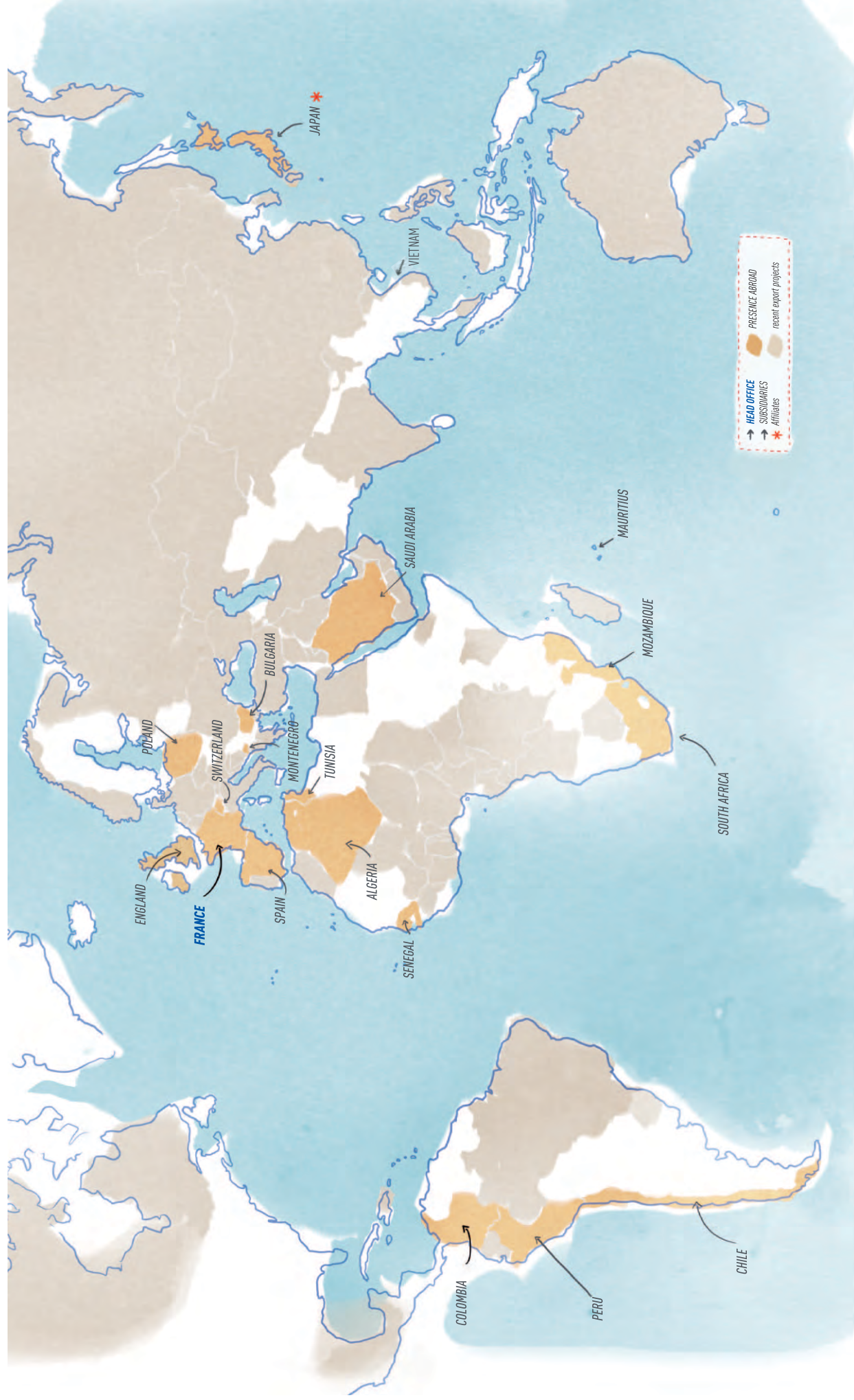


WATER
& ENVIRONMENT

TECHNICAL ORGANOGRAM

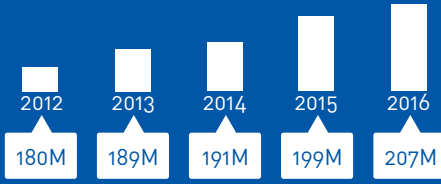


INGEROP'S PRESENCE IN THE WORLD



KEY FACTS

INGEROP TURNOVER WORLDWIDE (in M €)



Total Ingerop Staff

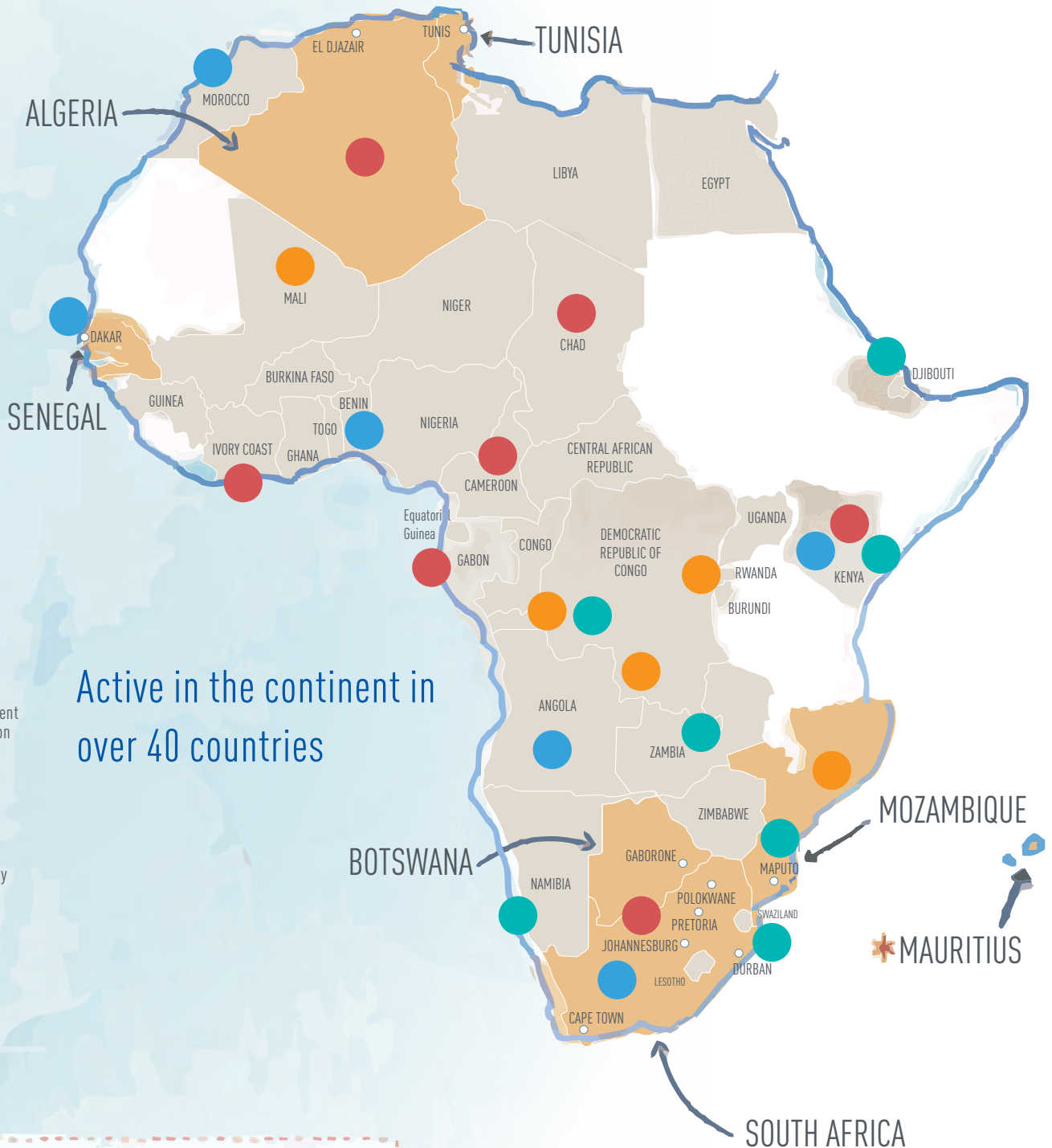


Total Staffing Number in Africa



Countries Around the World

INGEROP'S ACTIVITY IN AFRICA



Buildings



Urban Development & Transportation



Energy & Industry



Water & Environment

- BRANCH OFFICES
- ★ MAIN HOLDING COMPANY
- SUBSIDIARIES
- RECENT EXPORT PROJECTS



Inventing
for
tomorrow

INGEROP
Inventing for tomorrow

- | Teaching and research
- | Hospitals and healthcare establishments
- | Sporting, cultural and leisure facilities
- | Commercial property
- | Commercial urban planning
- | Housing and accommodation
- | Stations and terminals



➤ **CUT - Master Plan of Vision 2020**

Lead Consultant for the DHET 3-300 Infrastructure Programme for a period of 3 years. Construction of several new buildings, refurbishment of several buildings and Design and supervision for a full professional team

South Africa



➤ **New SONATEL Headquarters**

Construction Project of a housing complex consisting of 2 buildings (Ground Floor + 5 Storeys & Ground Floor + 7 Storeys + 2 Basements) both buildings consist of a ground floor for offices, a conference room and a restaurant.

Senegal

“through excellence, we invent tomorrows greatness today”

Neel Daya
Managing Director



BUILDINGS



➤ **Gautrain Hatfield Station**

Ingerop South Africa were appointed to critically review the preliminary design, actively pursue and involve itself in all investigations and enquiries. Ingerop was responsible for obtaining all necessary statutory and regulatory approvals from the relevant authorities for the works.

South Africa



► **N2 Empangeni**

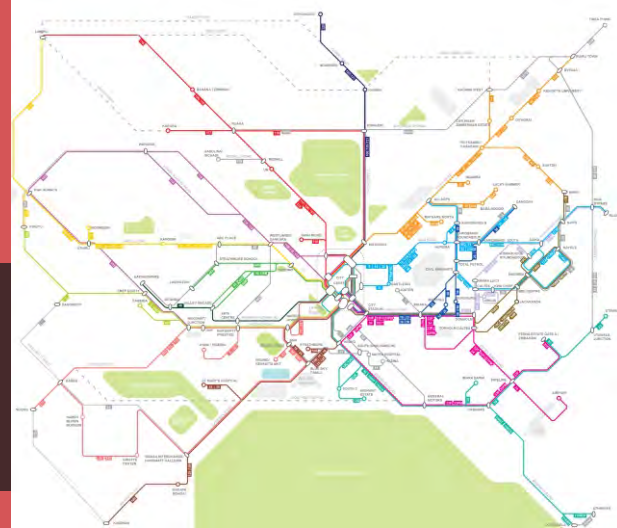
Ingerop was assigned to undertake the detailed design for the upgrade of the existing National Route N2, from a 2-lane single carriageway freeway to a 4-lane undivided freeway, for a total distance of 55,1km road. This included a number of new bridges.

South Africa

► **Feasibility and detailed design of two lines of BRT**

The study outlined the important challenges hampering urban mobility within the Nairobi Metropolitan area. This involves the following: Eastern and Western Line 3 (27 km): Ngong and Juja / Komarock / Kangundo corridors, passing through the CBD (Central Business District); Western Line 4 (7 km) between the CBD and T-Mall via Mbagathi Way.

Kenya



- | Public transport planning and implementation
- | Roads and highways
- | Infrastructure networks
- | Bridges and tunnels
- | Urban development
- | Land use management and planning
- | Railways
- | Urban transportation
- | Transportation systems and equipment

► **SENA Railway Line (600 Km)**

Rehabilitation of the Beira/Dondo – Moatize railway line in Mozambique
The scope of this assignment included platforms, railways, bridges (i.e. Dona Ana metallic structure – 7kms long), culverts, drainage systems and all other related facilities such as train stations, and buildings required for the operation of the railway.

Mozambique



URBAN DEVELOPMENT AND TRANSPORTATION

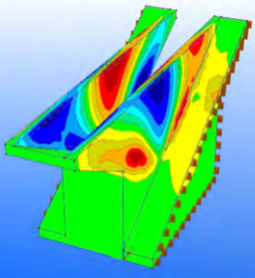
- | Dams
- | River hydraulics
- | Water and Infrastructure
- | Urban water
- | Ports and coastal engineering
- | Hydraulic developments
- | River abstraction structures
- | Environment



➤ **Hazelmere Dam Raising**

Ingerop South Africa (ISA) was appointed by Department of Water & Sanitation (DWS), to attend to the project for the raising of the Hazelmere Dam in KwaZulu-Natal. This will see the construction of the highest Piano Key Weir, as well as the installation of the highest capacity ground anchor through a dam wall, globally.

South Africa



WATER & ENVIRONMENT



➤ **Rehabilitation of Massingir Dam**

The 4.500m long earth fill Massingir dam constructed in early 1970's was never completed due to the civil war in Mozambique. The Government of Mozambique received a loan from the African Development Bank to do the required upgrading of the dam wall to ensure its safe operation. Ingerop supplied the design engineering services during construction

Mozambique

Solid Waste Management in Kibera
Kenya

Ministry of Land, Housing and Urban Development has awarded Ingerop South Africa in joint venture with Antea Group of France this project to build the capacity of CBOs/NGOs to manage solid waste collection and disposal in Kibera, the largest slum in Nairobi, and reportedly the largest urban slum in Africa.



- | Hydropower
- | Industrial buildings
- | Nuclear
- | Data centers
- | Power plants
- | Renewable energy
- | Waste to energy - Oil and gas



► **INGA II : G23 Refurbishment and Emergency Works**

Inga II has 8 units installed of which only 4 were operational. The feasibility studies for the rehabilitation of the 4 operating units identified the need to first refurbish one of the units not in service and to undertake emergency work on the 4 operating units.

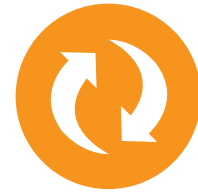
DRC



► **Cahora Bassa Hydropower Scheme - Owners Engineer**

The Cahora Bassa Dam system is the largest hydroelectric scheme in southern Africa containing 5 x 415MW turbines. Ingerop was responsible for the rehabilitation and upgrading of the spillway gates.

Mozambique



ENERGY & INDUSTRY

► **Ruzizi I&II**

Ingerop was responsible for the studies of rehabilitation of the hydroelectric power station of Ruzizi I and Ruzizi II and associated substations

DRC



► **Selingue & Sotuba**

Ingerop was responsible for the rehabilitation of hydroelectric schemes

Mali



► **Sélingué and Sotuba hydropower plant**

Sélingué - Construction took place between November 1976 and July 1981. A renovation of the civil works allowed to raise the upstream operating level from 348,500 m to 349,000 m. Rehabilitation and renovation works of the electro-mechanical equipment took place from 1998 to 2001.

Sotuba - The dam was built between 1926 - 1928. The power plant was built between 1964 and 1966 and electromechanical equipment were renovated in 1990 and 1991. Mean annual power production is 37,7 GWH. A technical expertise was ordered to define the necessary rehabilitation works.



SOUTH AFRICA

GAUTENG OFFICE (HEAD OFFICE)

+27 (0) 11 808 3000
2nd Floor, 138 West St, Sandown,
Sandton, 2031, South Africa
jhb@ingerop.co.za

KZN OFFICE

+27 (0) 31 266 8363
2nd Floor, 53 Richefond Circle,
Ridgeside Office Park,
Umhlanga Rocks, South Africa
dbn@ingerop.co.za

SENEGAL OFFICE

+221 33 824 92 58
SICAP Sacré Cœur
Cité Keur Gorgui
Immeuble Hermès 4 - Lot N° 95
BP 4153 DAKAR, SENEGAL
ingerop.senegal@orange.sn

CAPE TOWN OFFICE

+27 (0) 21 914 2833
Office Suite 209, Tyger Lake Building,
2 Niagara Way, Tyger Falls, Bellville
PO Box 15654, Vlaeberg, 8018
cpt@ingerop.co.za

POLOKWANE OFFICE

+27 (0) 15 295 5810
No 8, Amy Park, 128 Marshall Street,
Polokwane, Limpopo
plk@ingerop.co.za

MOZAMBIQUE OFFICE

+258 1 49 66 50 05
Rua Da Argélia No. 263
Maputo- Mozambique
mpm@ingerop.co.za

MAURITIUS OFFICE

+230 454 68 68
3B-3rd Floor, Citius Building,
31 Cybercity, Ebene, Mauritius,
ingerop.mau@ingerop.co.za